

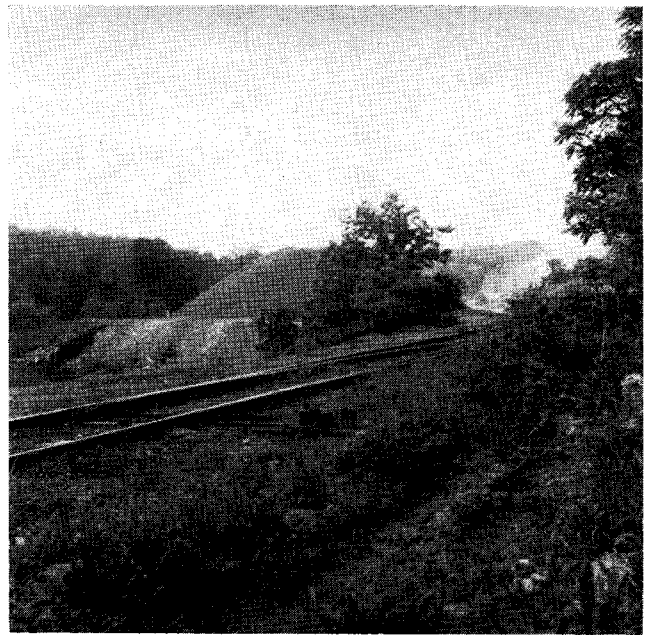
It is only above Loch Raven Reservoir that significant development occurs. The Northern Central Railroad, on its way north from Baltimore, enters the valley at Phoenix and occupies the east bank of the valley floor from the head of Loch Raven Reservoir to Blue Mount, a distance of 8 or 9 miles. The villages of Phoenix, Sparks, Glencoe, Corbett and Monkton are all located in this stretch; and at Big Falls Road, an extensive quarry is in operation. Throughout this reach occasional farms are located at those places where the valley floor widens out, and a number of well constructed residences are also scattered along the river. There are stretches of lovely woodland, however, and the meadow bottoms offer a peaceful setting for quiet riverside activity.

Above Blue Mount, the river is again left almost entirely to nature. Except for a few country road crossings, there are no developments until Prettyboy Dam is reached. Similarly, above Prettyboy Reservoir, there are no developments until the Valley Ranch, a dude ranch located at Roller, is reached. A mile above Roller the Western Maryland Railroad enters the valley, however, and continues along the river through Lineboro into Pennsylvania.

Little Gunpowder River—Unlike the lower half of the main branch of the Gunpowder River, there are some developments in the Little Gunpowder river valley which to some extent limit the area which should be included in a park. These are not extensive, however, and should not be viewed as a deterrent to development of a park along this stream.



View of railroad upstream from Phoenix Bridge



Quarry operations east of Big Falls Road

A trailer camp, located on the Harford County side of the river, just off the Old Philadelphia Road, probably must be by-passed. An extensive quarrying operation is located one-quarter mile east of Harford Road, on the south side of the river. On the north side of the river at this same location is an animal-wastes rendering plant. The road to this plant also serves the quarry by way of a private bridge across the river. The quarry would, of course, be an obstacle to acquisition, and must be by-passed, but the rendering plant produces such an objectionable odor for such a distance up and down the river, depending on wind direction, that it will probably be necessary to purchase and remove it if this area is to provide a satisfactory park environment. Odors were clearly discernible at least a mile away.

The Little Gunpowder was formerly used extensively for water power, and mills were constructed all along the river. Nothing but the remains of these are discernible today. A modern manufacturing plant is located at the village of Jerusalem, however, and would have to be by-passed. A cluster of dwellings located at Franklinville must also be by-passed. Several small establishments are located at other road crossings; such as, at Harford Road, but these are not a serious deterrent to park development.

At the Old Philadelphia Road, the Water Department of the City of Baltimore now owns land on both sides of the road and both sides of the river. The State has also acquired land on both sides of the river a short distance above the Old Philadelphia Road to provide for the proposed new Northeast Expressway.